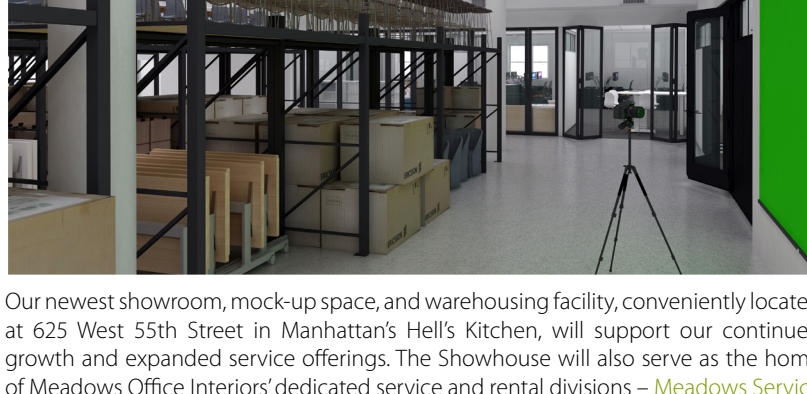




## Meadows News

### MEADOWS SHOWHOUSE: SNEAK PEEK!



Our newest showroom, mock-up space, and warehousing facility, conveniently located at 625 West 55th Street in Manhattan's Hell's Kitchen, will support our continued growth and expanded service offerings. The Showhouse will also serve as the home of Meadows Office Interiors' dedicated service and rental divisions – [Meadows Service Group](#) and [Meadows Rental Group](#). Still undergoing construction, our new space measures 20,000 square feet and is located on the fifth floor of a six-story building with direct access to the West Side Highway and a large loading bay. Unique features will include a living plant wall by [Blondie's Treehouse](#), [Ideum Platform Touch Table](#), [KalWall](#) window, and large custom-painted mural.

Stay tuned for information about our Showhouse grand opening! Want to visit us sooner? Stop by our state-of-the-art Showroom at 885 Third Avenue, 29th Floor to see our floor to ceiling capabilities in a real-world working environment.



### MEADOWS HIRES DIRECTOR OF CUSTOMER EXPERIENCE



Meadows Office Interiors is pleased to announce that **Jennifer Bettencourt** has joined the team as Director of Customer Experience. As a former Senior Space Planning Manager for a large financial institution, Jennifer can share the customer viewpoint, allowing Meadows to better understand client expectations and develop new ways to meet or exceed them. Jennifer will work closely with Meadows team members, in every discipline, to elevate our level of service, including how to approach projects holistically, all the way through the end-user/employee experience.

"Well-respected in the industry, Jennifer's experience, professionalism and approach are a perfect fit to represent Meadows and its subsidiaries in the market," said Meadows CEO Sheri David. "Jennifer has over 20 years of experience in design, global facilities and corporate real estate, bringing a unique perspective to the Meadows team."

## Recent Events

### THE DIGITAL WORKPLACE IN LEGACY BUILDINGS



On Tuesday, June 27, Meadows hosted the latest in a series of events in collaboration with [Metropolis](#) magazine. In the form of a panel discussion moderated by Metropolis Editorial and Brand Director Paul Makovsky, *The Digital Workplace in Legacy Buildings* took an in-depth look at LinkedIn's occupancy of the iconic Empire State Building. Designed by M Moser and partially furnished by Meadows Office Interiors, this exciting and ambitious workspace creates room for genuine human interaction, while calling on interior architecture and furnishings to fuse strategy, connectivity, and hospitality.

Panelists included Sheri David, CEO at Meadows Office Interiors, Chris Butterick, Regional Workplace Leader, Americas at LinkedIn, and Charlton Hutton, Senior Designer – Practice Leader Technology at M Moser Associates.

In addition to a panel with a Q&A portion, *The Digital Workplace in Legacy Buildings* also featured a networking hour with cocktails and light snacks, and the event was streamed for remote viewers via Facebook Live.



## Designer Picks

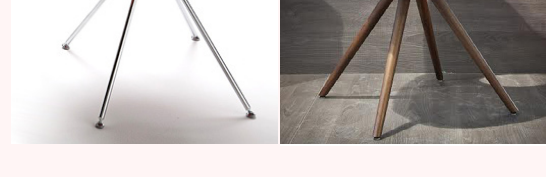


### CHARLENE STEVENS

Project Manager/Designer

"Elegant yet daring, the 907 Up-Chair, designed by Martin Ballendat, is by far one of my favorite pieces. Its organic nature and vivacious curves make it the center of attention in any room. Constructed with innovative Freeform Advanced foam, this chair is as comfortable as it is versatile. The seat can be specified in 12 solid colors, fully upholstered or partly upholstered leather, with solid or walnut arms that peek out and cascade down into a shallow well that embraces its users. Available as a chair, lounge chair, or barstool, with 2 different base options and a plethora of add-ons, its versatility is unmatched by any seating line I've yet to see."

Up-Chair by Toton



## What We've Been Reading

"Activity-Based Working & Wellness: The Human/Nature Side of the Popular Design Typology"

– Work Design Magazine

"What will the office look like in 10 years? 6 experts predict the future"

– CNN Style

"The Spanish Architects Mastering the Art of the Coworking Space"

– Metropolis

"A Designer's Guide To Brainstorms That Are Actually Useful"

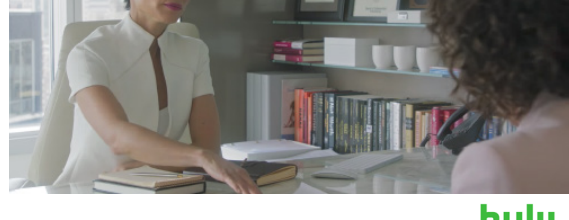
– Co.Design

"19 Examples of How Good Design Will Reshape Our Future"

– Architectural Digest

## DIFFICULT PEOPLE

See our Showroom featured on season 3 of Hulu's "Difficult People!"



hulu

## In Our Showroom...



### THE RESOURCE LIBRARY

Meadows' [Resource Library](#) was designed as a multifunctional and collaborative space. The room's power accessibility, inclusion of an Infocus Mondopad, and proximity to the Materials Library make it the perfect environment for client and designer collaboration. But the space's flexibility welcomes project team take-offs and employee debriefings as well. The Resource Library features contemporary furniture pieces by Cappellini and Svend Nielsen. For more information, visit our [showroom](#) page.

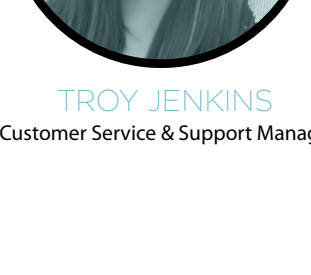
## ...And On Our Website



### FEATURED PRODUCTS

Workplace design is always evolving, and every client has a unique vision for their office. We have aligned with hundreds of [manufacturers](#) to provide our customers a vast assortment of furnishings and interior architectural elements from which to choose. Our [featured products](#) are selected to provide a glimpse into the variety we offer. Enjoy a user-friendly browsing experience, and discover the next must-have piece for your office!

## Employee Spotlight



### TROY JENKINS

Customer Service & Support Manager

Troy Jenkins may be new to the design industry, but she is no stranger to the Meadows team! As a Senior Project Manager at Spectrio, Troy worked alongside former Spectrio owners, Marissa Allen, Sheri David, and Dana Justus for almost 10 years. Upon joining Meadows, she says, "I feel like I'm home now."

Troy is part of the Meadows Service Group team. As Customer Service & Support Manager, she oversees all client support personnel and facilitates our largest and most complex maintenance, asset management, and inventory control service contracts.

When Troy is not working remotely from her home in Oklahoma, she joins the rest of the Meadows team in the New York City Showroom. During her free time in NYC, she can be found socializing with colleagues or enjoying the city's architecture. She says, "There's so much to take in...it's breathtaking!"

Troy loves the fast pace of the city and considers joining the Meadows team one of her most notable career accomplishments. On the weekends you'll find her OUTSIDE: hunting, fishing, camping... She owns a 22-acre property at the foot of the Ozark Mountains where she and her family spend most of their time.

**Favorite Viral Video?**  
The one with the "Not Today" lady. "We use that phrase around the office all the time."

**Apple Music, Spotify, or Pandora?**  
Troy and her husband love streaming music on Pandora. "I always take my portable speaker when we go camping and play my Pandora stations for hours."

**Binge watching any shows?**  
On Sundays, while her boys (husband and two sons) have nap time, she enjoys TV time – bingeing movies, *The Walking Dead*, and soon...*Game of Thrones* (she's never seen an episode!).

**What Game Show would you be on?**  
Troy admits, "I have an old soul, so I would have to go with *The Wheel of Fortune*."

## Everybody Loves Troy

We asked Troy's colleagues to tell us their favorite thing about working with her.

"Troy became an integral part of the Meadows team as soon as she stepped off the plane! She is a tremendous resource for MOI and MSG, jumping in to help anywhere she sees it's needed!"

She has been able to translate her years of customer service and project management experience into her latest role at Meadows, planning process efficiencies and helping users learn to work within our systems. Her drive and determination is inspiring and her positive attitude is contagious!"

– Dana Justus  
Executive Vice President

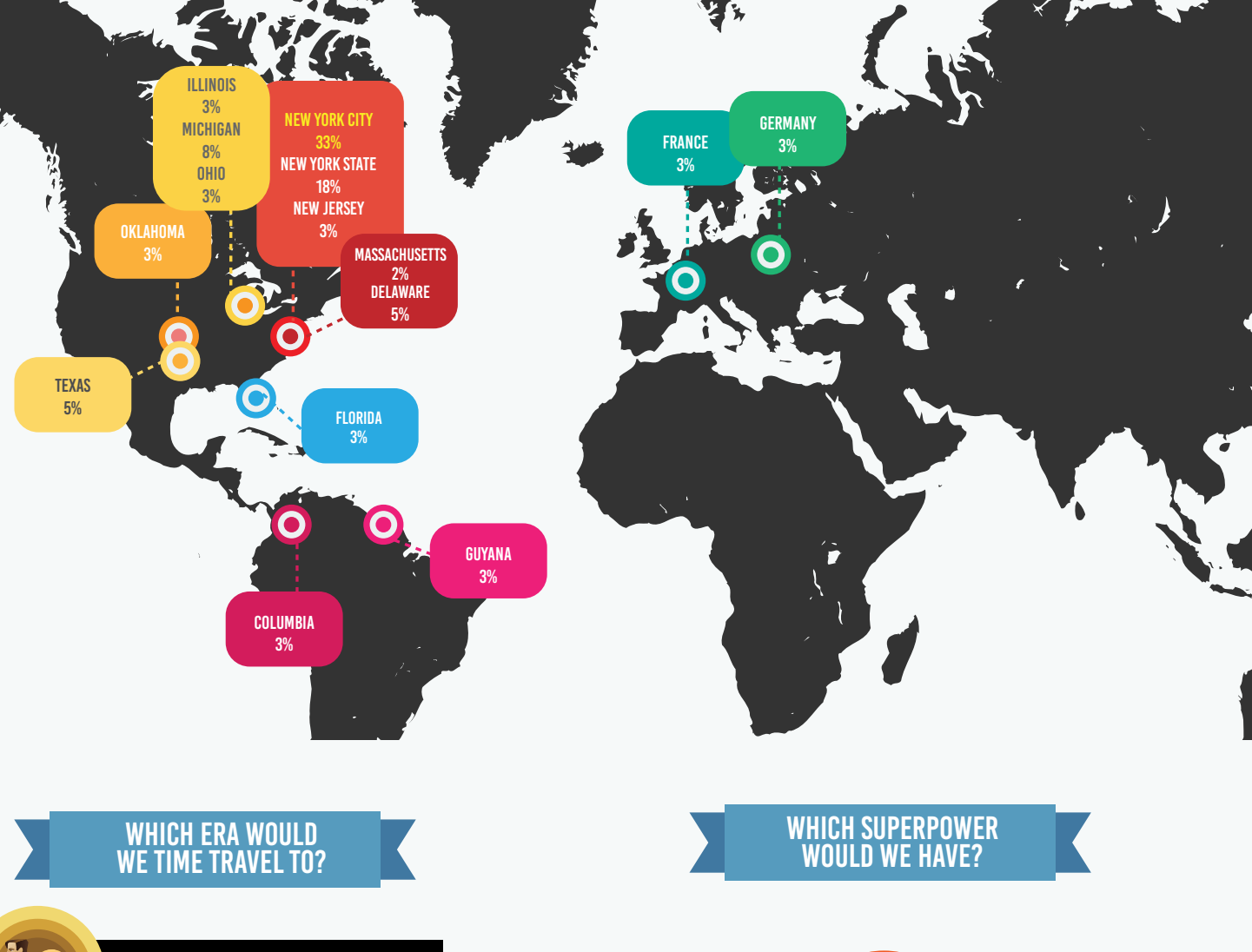
"I truly enjoy working with Troy, and have come to know her as a valuable asset to the team. Troy is a hard-working team player. Her knowledge and expertise of NetSuite and client services is impressive. I have had the opportunity to observe and learn from Troy's professionalism. She is consistently positive, and takes on all assignments with enthusiasm and dedication!"

– Jose Flaz, Warehouseman

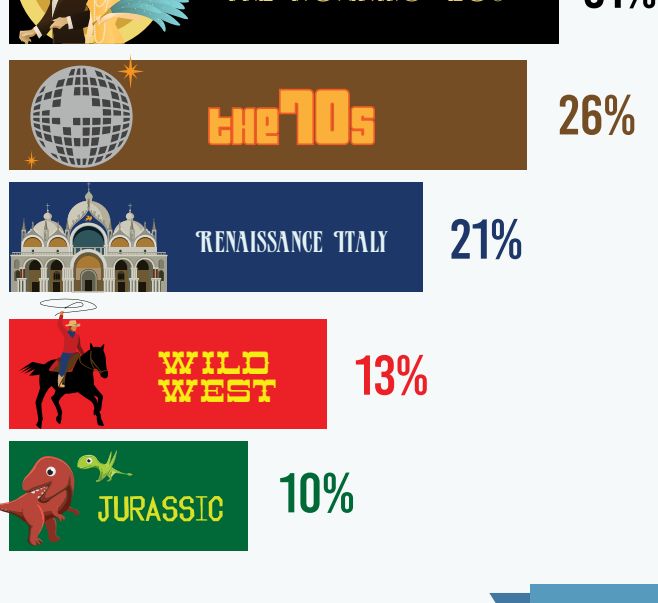
# Getting To Know Meadows

Think you know us? Think again! Here are the surprising results from our recent employee survey.

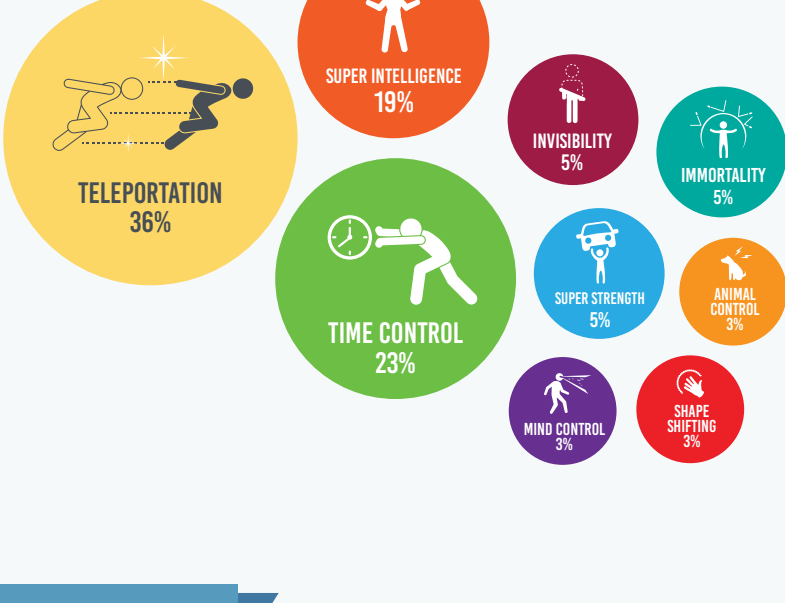
## WHERE WERE WE BORN?



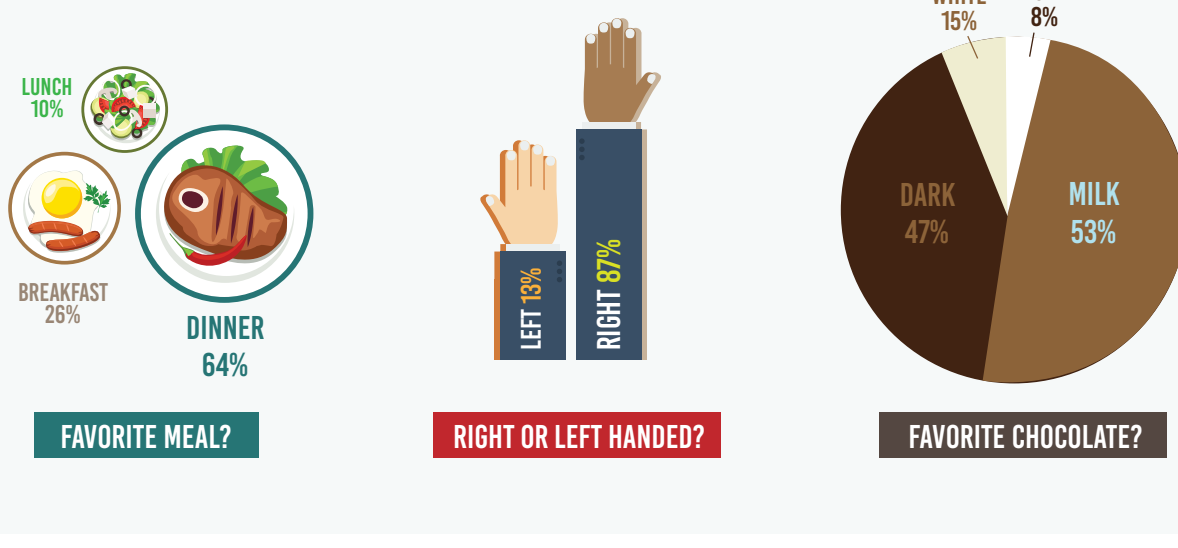
## WHICH ERA WOULD WE TIME TRAVEL TO?



## WHICH SUPERPOWER WOULD WE HAVE?



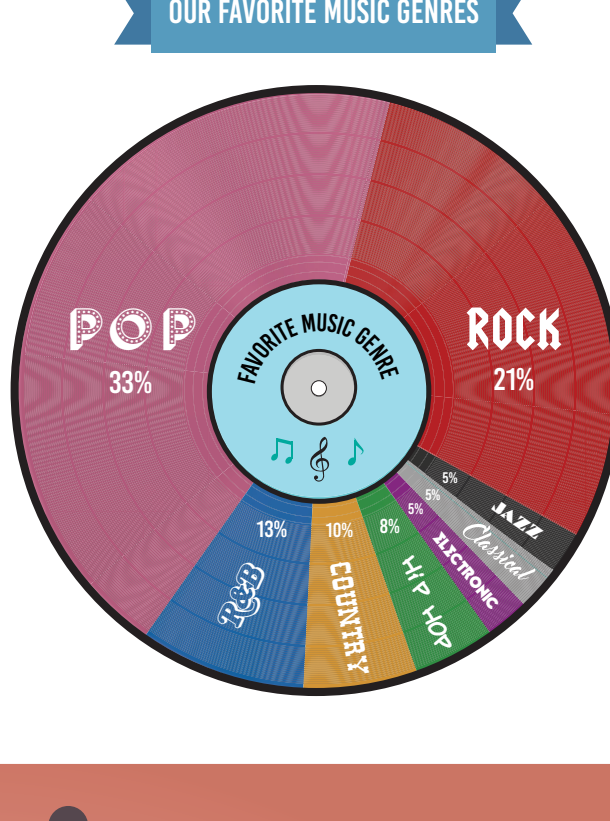
## QUICK POLLS



## OUR STRONGEST SENSE



## OUR FAVORITE MUSIC GENRES



## OUR FAVORITE TV SHOWS

